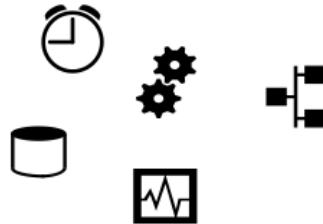


What is the “SpiderControl AutomationBrowser”:

Patent Pending

Answer: Take an HTML5 Web-Browser on an industrial panel and add many helpful features that are useful in a PLC environment



Which Features?

Compatibility with legacy Java Applets (e.g. CODESYS 2.3 Webvisu)

PLC station list to navigate to different Web-servers (and back)

Kiosk-Mode with expansion of sub-windows to history

Include an always available On-Screen-Keyboard

Integrate External Devices as Input: RFID, Scanner

Optional: CODESYS Webvisu V3.x with MicroBrowser for much faster response

Password Protection to prevent operator to change panel or URL settings

Comatibility with Legacy Java Applets

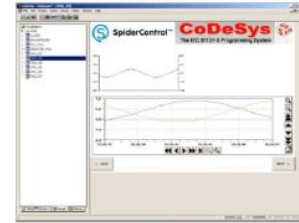
Problem:

Legacy Web-HMI like CODESYS Webvisu V2.x or old SpiderControl HMI use Java Applets which are NOT supported by current Browsers

Solution: The SpiderControl AutomationBrowser automatically detects these pages and starts the respective viewer (MicroBrowser for Webvisu V2.x or HTML5 Viewer for other content): Seamless navigation through all Web-HMI's



CODESYS Webvisu
V2.x / V3.x



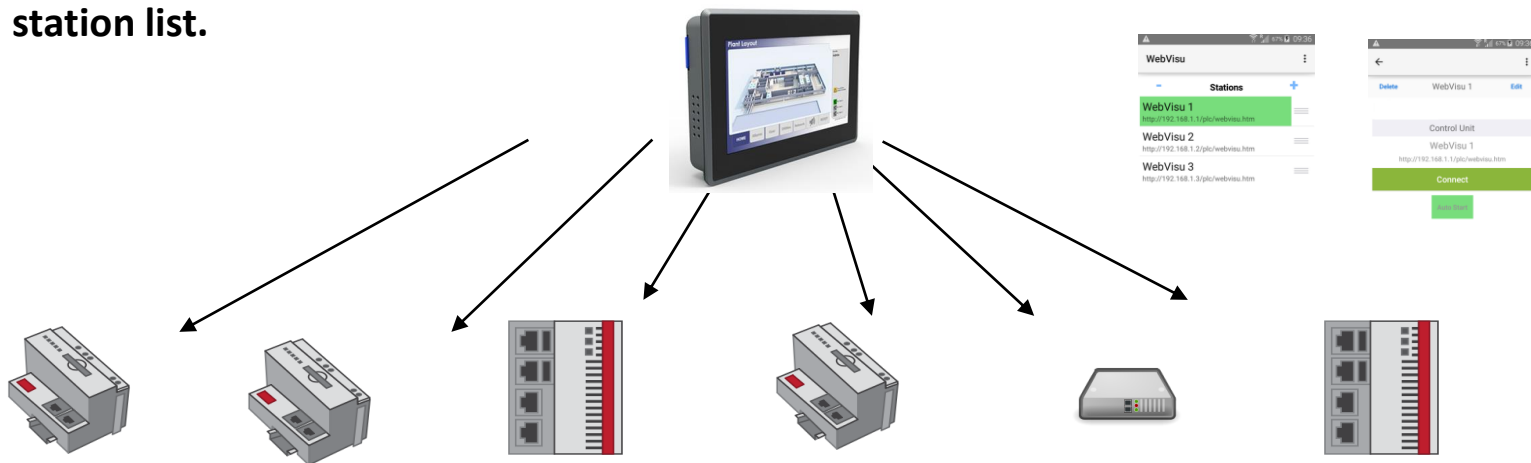
Webvisu with Java Applet



PLC station list to navigate to different Web-servers (and back)

Problem:

The same operator panel is used to visualize several PLC's and Web-Servers.
You need a start page on the panel where you can enter and select the URL's of all your PLC's. And you need a way to return from the PLC's Web-HMI to your station list (although you are in kiosk-mode).
Furthermore: You want a PW protection to prevent the normal user from changing the station list.



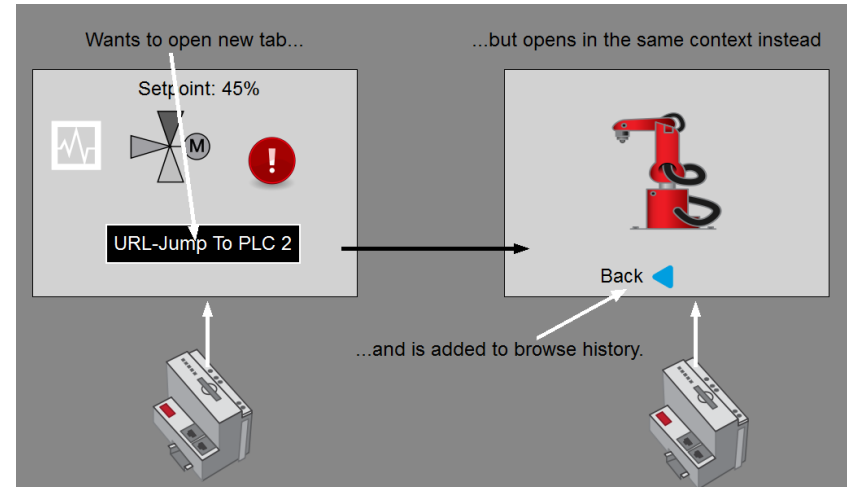
Kiosk-Mode with expansion of sub-windows to browse history

Problem:

On the panel, the AutomationBrowser shall run in the so-called 'Kiosk-Mode', hiding menus, URL and OS. In this context, the Browser component cannot open URL-Links to sub-windows that would open a second tab or a sub-window.

The AutomationBrowser solves this by opening the sub-window in the present view and to add this jump to the URL history.

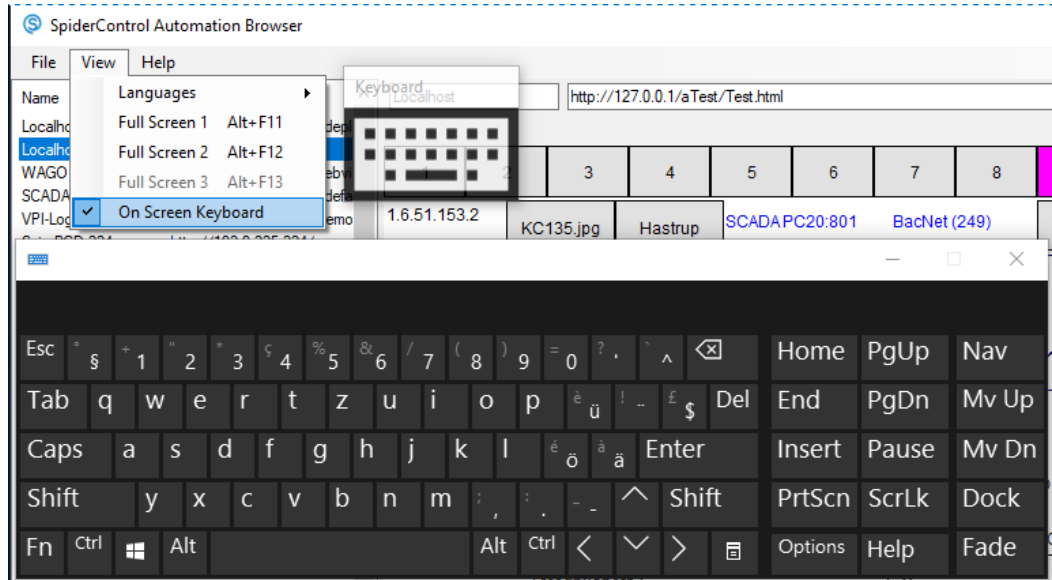
Together with a 'Back' and a 'Home' button in the slide-out menu, such HMI's become usable in a kiosk-mode panel context.



Include an always available On-Screen-Keyboard

Problem:

On Screen Keyboards are needed when you want to operate in touch-panel mode only. Especially on Windows10, the On-Screen-Keyboard does not always pop up when you really need it. The AutomationBrowser for Win10 offers a mode which always keeps a little movable on-top window open which will bring in the windows On-Screen-Keyboard at any time



CODESYS Webvisu V3.x with MicroBrowser for much faster response

Problem:

CODESYS Webvisu V3.x is implemented in HTML5/JavaScript and runs in any standard Browser. On industrial Panels, the performance can be poor, especially when it comes to Num-Pad and Key-Pad operations.

The AutomationBrowser offers both options either to run original HTML5 viewer or to use the MicroBrowser viewer to display a CODESYS V3.x HMI. The MicroBrowser viewer is much faster than HTML5, allowing for an excellent performance also on slower panels.

Password Protection to prevent operator to change panel or URL settings

Problem:

Panel operators

- shall be limited to browse only a pre-defined set of URL's**
- shall not exit the Browser and come to OS level**
- have no possibility to exit the kiosk mode**

Super-Users

- will have a Password to modify these URL's and to change panel settings on OS level (IP Settings,...)**
- can restrict access to one single target or to a predefined list of targets**
- can add a start-HMI located on the panel to offer full CI navigation**