

ctrlx ScadaServer– Howto install application

Part: Manual

788.1

Version

Version	Date	Comment	Author
1.00	12.05.22	First Version	ma
1.01	14.03.23	Update	ma
1.02	08.05.23	Update	ma

Content

1. Introduction.....	3
2. Preparation.....	3
3. Copy HMI with ScadaEditor.....	4

1. Introduction

With application ScadaServer for ctrlx you can use SpiderControl HMIs with ctrlx platform.

2. Preparation

For preparation you need following steps:

1.) Please install PLC app and program project PLCProject.project.

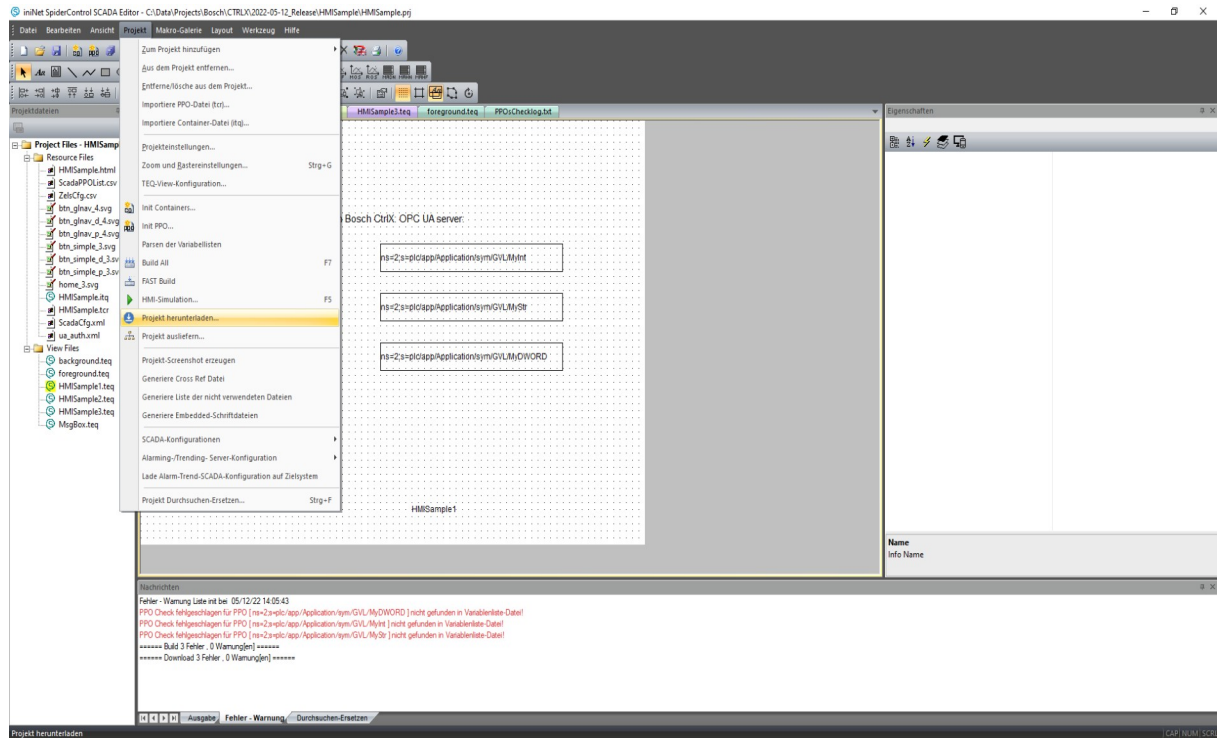
2.) Please download software SCADA PC HMI Editor:

<https://spidercontrol.net/download/downloadbereich-neu/#scadaeditor>

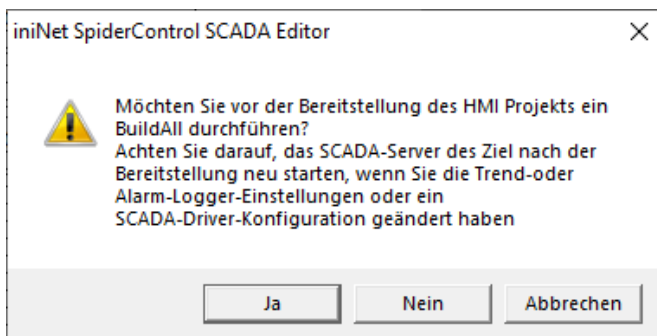
3. Copy HMI with ScadaEditor

Please install app ScadaServer (ctrlx-spidercontrol-scadaserver_1.0.3_arm64.snap) on your ctrlx device and switch PLC to Operation Mode. Open HMI project HMISample.prj in folder HMISample with software Ininet SCADA PC HMI Editor.

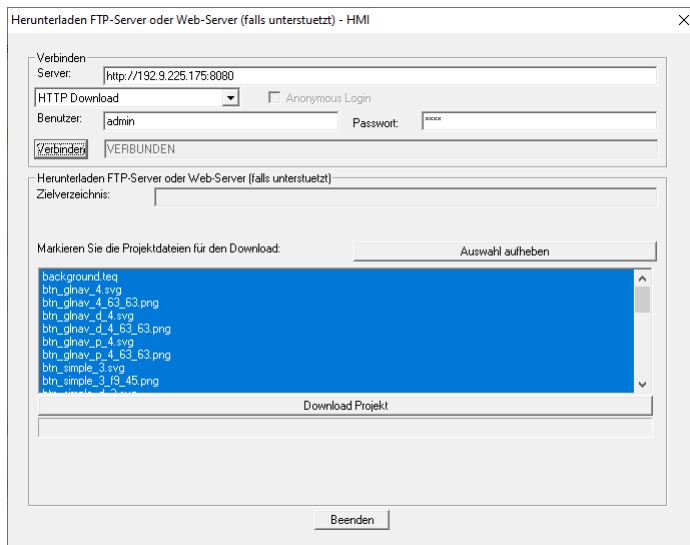
Select option "Download Project ..." (German-Version: Projekt herunterladen)



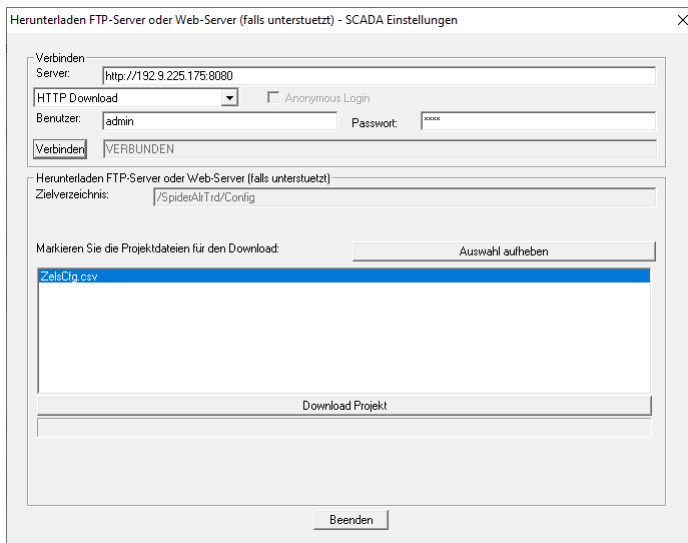
Press button Yes (Ja)



Please enter IP address of ctrlx system to field Server. Press Connect (Verbinden) and press button Download Project (Download Project). Press button Exit (Beenden).



Please do same step for Scada Configuration. Press Connect (Verbinden) and press button Download Project (Download Project). Press button Exit (Beenden).



Now you need to reboot ctrlx platform. After reboot you can open HMI with your PC browser. Sample URL is e.g. <http://192.9.225.175:8080/HMISample.html>. Please replace IP address. You will see HMI below.



Read/Write access to demo variables of Bosch ctrlx PLC project:

MyBool	1
MyUSInt	10
MyUInt	2122
MyUDInt	23466389
MyULInt	985466633333186
MySInt	-127
MyInt	-12345
MyDInt	-95744477
MyLInt	-957444773567785555
MyReal	3.141593
MyLReal	3.141593
MyStr	Mein Teststring

Please note:

1.) Server is running in demo mode only for one hour. You need to restart ctrlx platform to restart server again. For licensing of server app you can contact info@ininet.ch.