



Web-Engineering

Spider Web-Kit

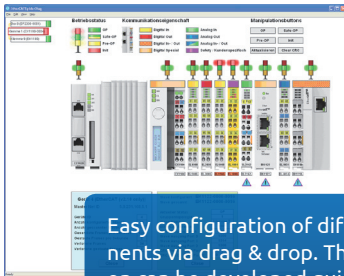
User-friendly browser-based programming!

With SpiderControl™ Spider Web-Kit, a PC application can easily be replaced by a browser-based application. So far, PC applications for configuration and programming of automation devices have been developed to the users. This is no longer state-of-the-art.

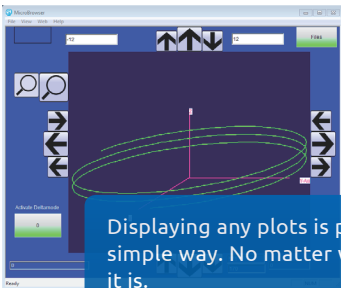
The browser-based programming offers enormous advantages:

- Easy configuration of different components via drag & drop
- Quick and easy development of system solutions
- Worldwide programming via tablet or smartphone
- Intuitive operation and highest usability, etc.

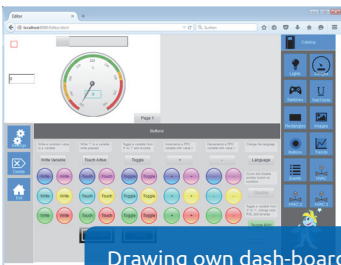
PLAIN AND SIMPLE CODE WITH YOUR APP OR BROWSER



Easy configuration of different components via drag & drop. This system solution can be developed quick and easily.



Displaying any plots is possible in a simple way. No matter what application it is.



Drawing own dash-boards is done in the browser-based graphical editor directly on the PC and is intuitive and easy.



The programming can also be done worldwide via tablet or smartphone. Usability is the main focus.

The Spider Web-Kit allows for fully browser-based applications instead

Up to now, browser interfaces on embedded systems have been limited to functionalities known from classic human-machine interfaces, which are characterized by typical elements such as buttons, lists or trend displays. But to catch up with the functionality of PC based configuration tools, an application needs to offer the design of dash boards, the configuration of components by drag & drop, logical connections of components as well as to display of any kind of graphical plots. These and many other features are now available in SpiderControl™. This makes SpiderControl™ no longer just a HMI tool, but a browser-based, graphical editor.

In the age of IoT and Industry 4.0, PC-based tools are no longer up-to date!

Please have a look at Spider Web-Kit and some of its highlights!

- Open to any operating system, such as macOS or Linux due to the use of HTML5.
- No software installation is required on the PC. You don't have obsolete or wrong software versions in the field.
- All data is stored on the devices or can be retrieved from the portal / cloud.
- The browser-based graphical editor allows to draw your own dash boards directly in the browser.
- Easy configuration of components by drag & drop.
- Additional functions can be integrated.
- Highest degree of freedom for product development.
- Complete solutions for OEM customers.
- For applications in a wide range of industries, such as e.g. robotics, automation, building technology, machine and plant construction.